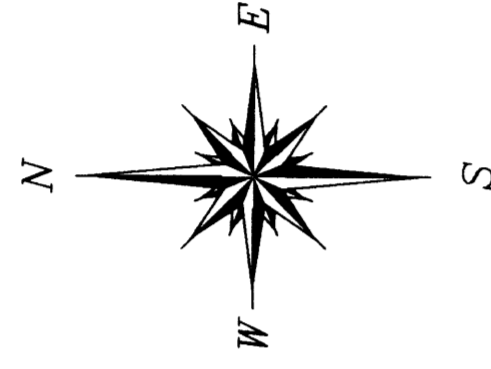


PEACH CREEK PLANTATION SECTION THREE



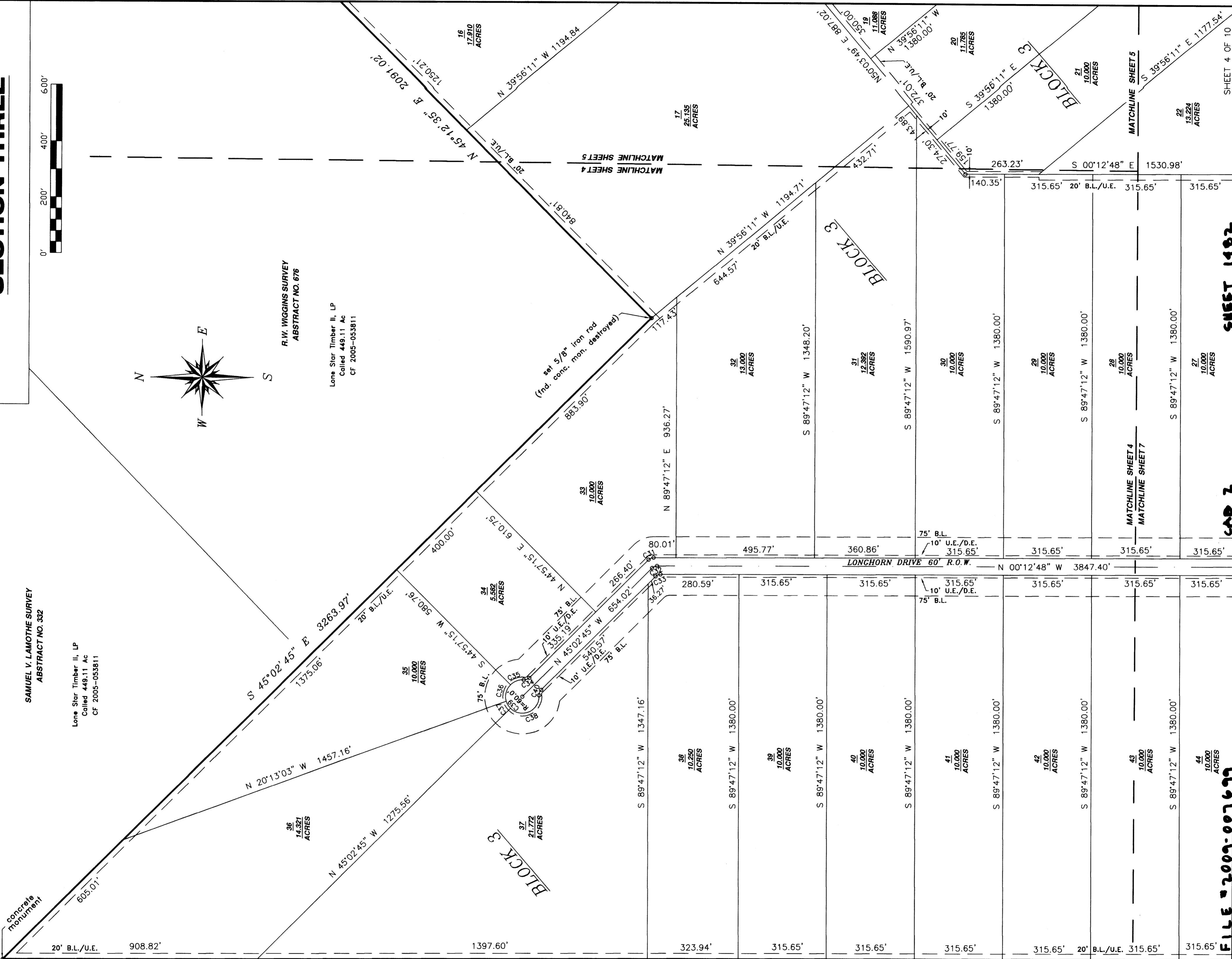
R.W. WIGGINS SURVEY
ABSTRACT NO. 676

Lone Star Timber II, LP
Called 449.11 Ac
CF 2005-053811

SAMUEL V. LAMOTHE SURVEY
ABSTRACT NO. 332

Lone Star Timber II, LP
Called 449.11 Ac
CF 2005-053811

14	Henry W. Taylor called 9.983 ac. C.F.#075-01-0286
15	Donald L. Bowers called 10.001 ac. F.C.#018-11-0261
16-B	Gary A. Shows called 5.001 ac. F.C.#783-10-2665
16-A	Kimberly D. Glenn & Gordon A. Trott Jr. called 5.0 ac. F.C.#893-10-0793
17	Gary V. & Cynthia A. Biaselli called 10.001 ac. F.C.#211-10-1698
18	Ronald Owen Young called 5.0 ac. F.C.#580-10-2878
19	Erik P. Geehan called 5.0 ac. F.C.#512-110283
20	Jerry O. Duelle called 10.0 ac. F.C.#804-01-0822
21	Gary L. & Kathy R. Harness called 6.0 ac. F.C.#220-10-0192
22	Gary L. & Kathy R. Harness called 6.0 ac. F.C.#521-10-1351
23	Charles E. Sr. & Mattie Dockery called 15.0 ac. F.C.#921-01-0668
24	Shawn & Tina Plaster called 4.19 ac. F.C.#790-00-2639
9	Murray S. Cox Sr. called 12.870 ac. F.C.#743-01-2114



FILE #2009-007699

CAD 2

SHEET 1402

SHEET 4 OF 10