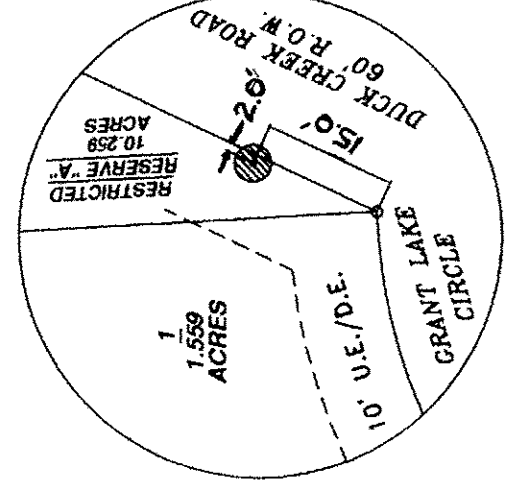
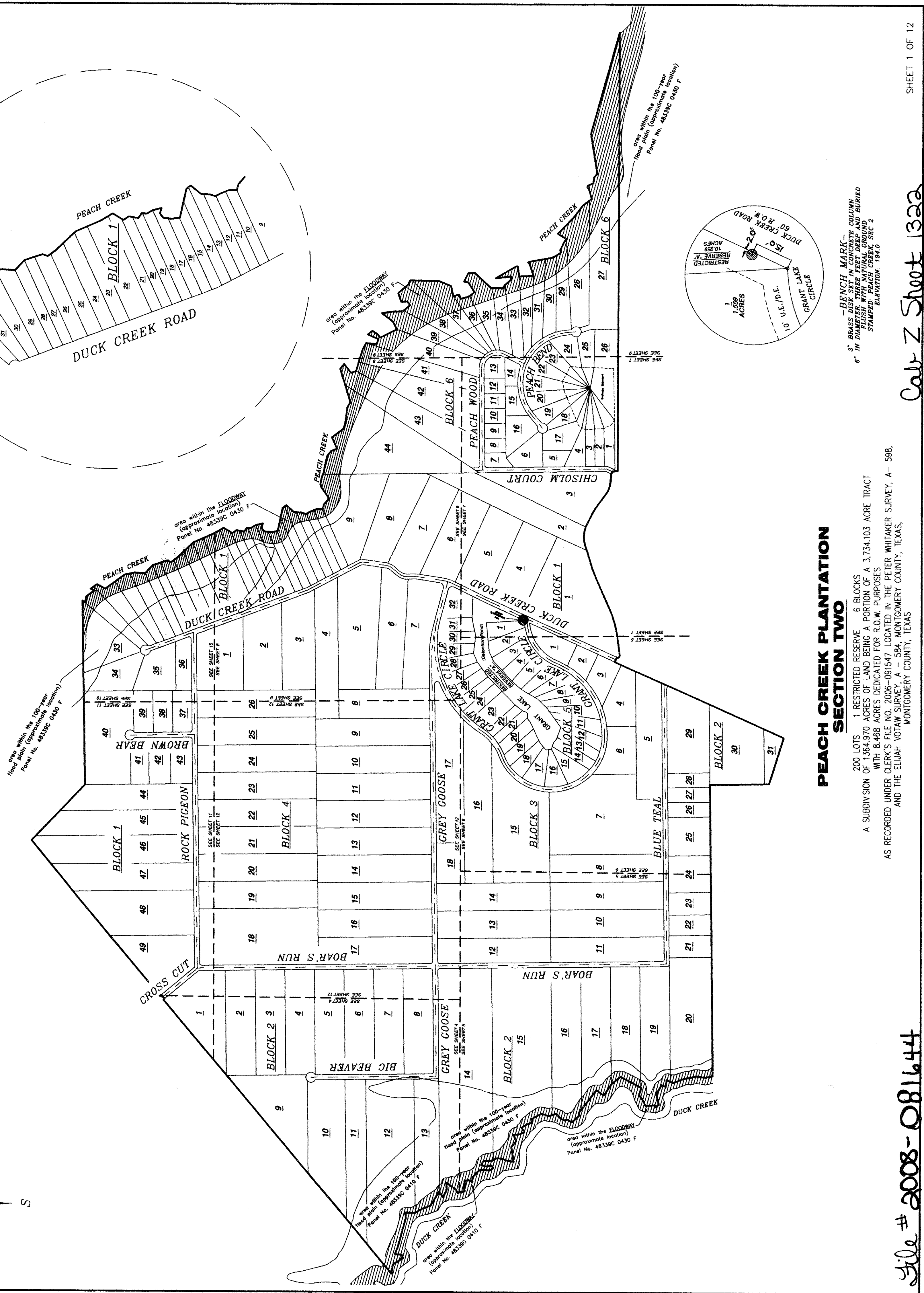
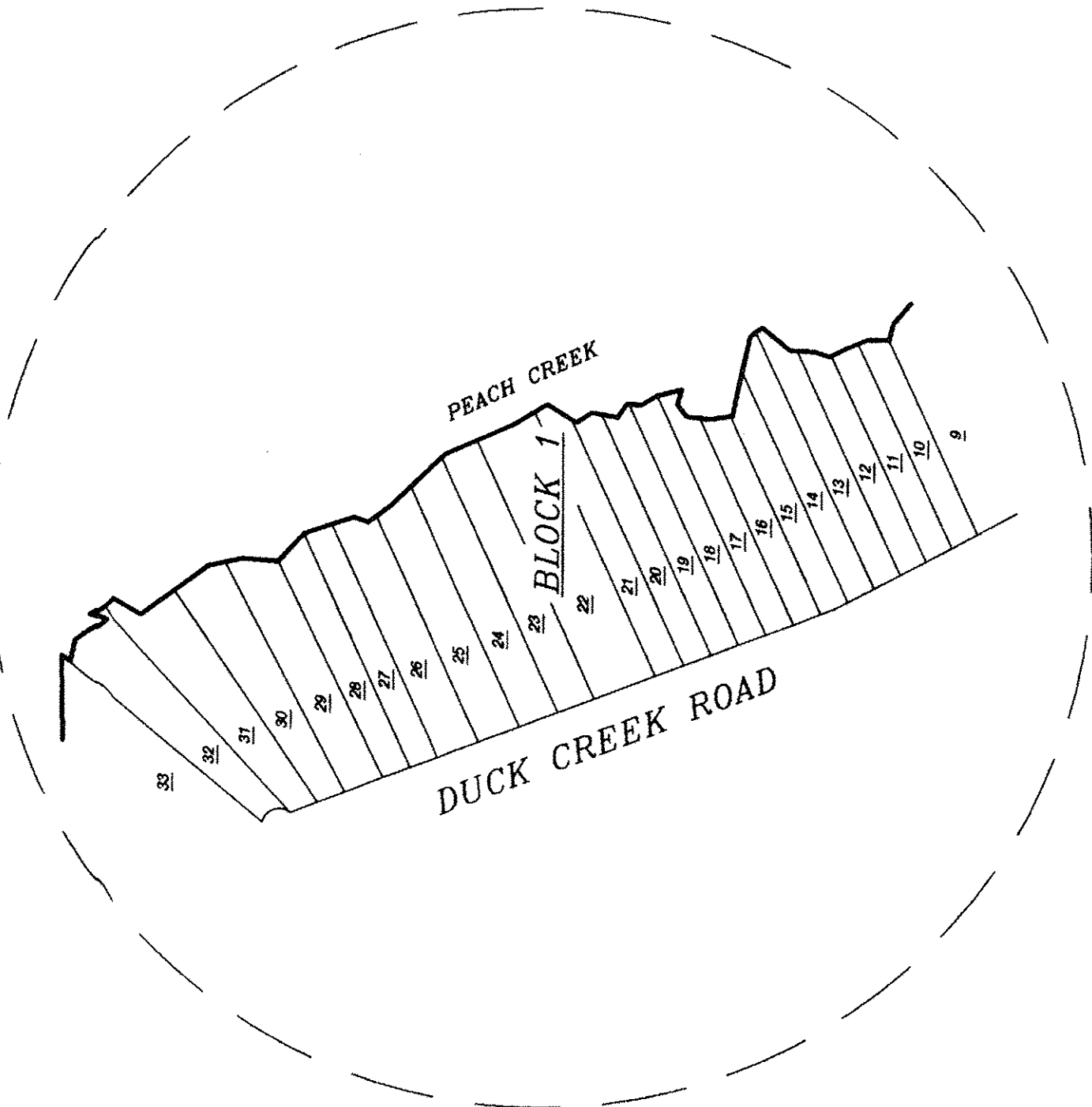


DETAIL



PEACH CREEK PLANTATION SECTION TWO

200 LOTS 1 RESTRICTED RESERVE 6 BLOCKS
A SUBDIVISION OF 1,364.970 ACRES OF LAND BEING A PORTION OF A 3,734.103 ACRE TRACT
WITH 8.468 ACRES DEDICATED FOR R.O.W. PURPOSES
AS RECORDED UNDER CLERK'S FILE NO. 2006-091547 LOCATED IN THE PETER WHITAKER SURVEY, A-598,
AND THE ELUAH VOTAW SURVEY, A-584, MONTGOMERY COUNTY, TEXAS,
MONTGOMERY COUNTY, TEXAS

3" BRASS BENCH MARK - COUSIN
6" IN DIAMETER THREE PEACH CREEK AND BURRED
FLUSH WITH NATURAL GROUND
STAMPED: PEACH CREEK, SEC 2
ELEVATION: 194.0

File # 2008-081644

Cal Z Shoot 132a