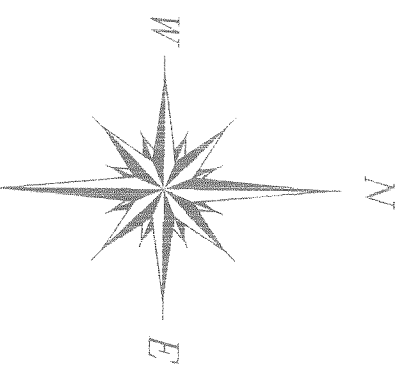


PEACH CREEK PLANTATION SECTION ONE

FUTURE PEACH CREEK PLANTATION
SECTION TWO
Peach Creek Plantation, LTD.
3,734.103 Acres
C.F. 2006-0091547
M.C.R.P.R.

Peach Creek Plantation, LTD.
157,326 Acres
C.F. 2007-043187
M.C.R.P.R.

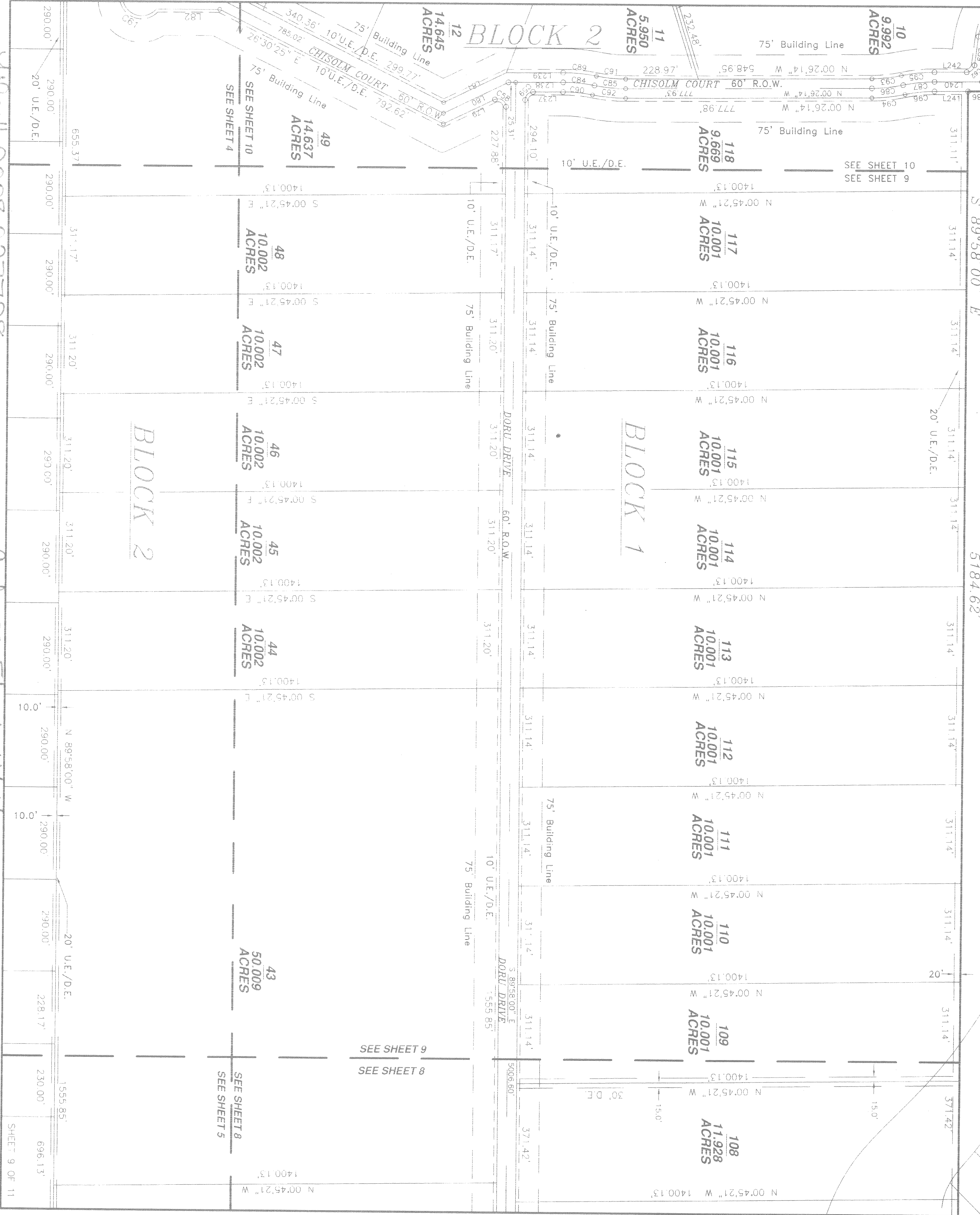


area within the 100-year floodplain
(approximate location)
48339C 0430F

area within the FLOODWAY
(approximate location)
48339C 0430F

SAN JACINTO COUNTY

(County maintained Prescriptive R.O.W.)
BROWN ROAD
3,282 ACRES
DEDICATED FOR
RIGHT-OF-WAY
PURPOSES



File # 2008-023728

Case # Sheet 1164

SHEET 9 OF 11